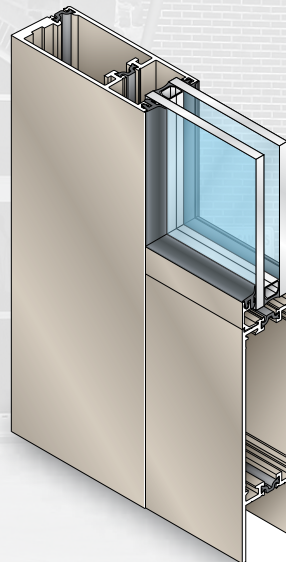


ENTRANCES

THERMAL SERIES 400-T DOOR



- Struct-Link II™ Nylon Thermal Break
- Mechanically Fastened and Welded Corners
- Accommodates a Wide Variety of Custom Hardware
- Medium Stiles
- Accepts 1" (25 mm) Insulating Glass
- Available in an Array of Architectural Coatings and Anodized Finishes

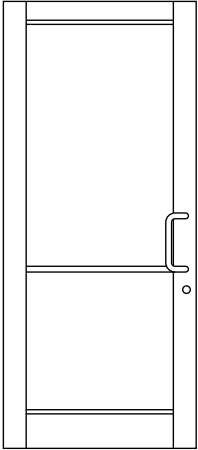


Our Thermal Entrance Doors feature a two glass stop design, Struct-Link II™ nylon thermal break, mechanically fastened and welded corners, and one of the best thermal properties available in a commercial entrance door. These entrances can easily accommodate a wide variety of custom hardware for specific job requirements. 10" (254 mm) bottom rail available to meet A.D.A. requirements.

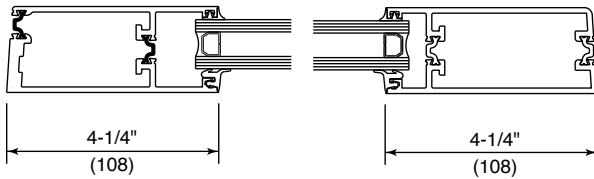
THERMAL SERIES 400-T

TYPICAL DETAILS

SERIES 400-T

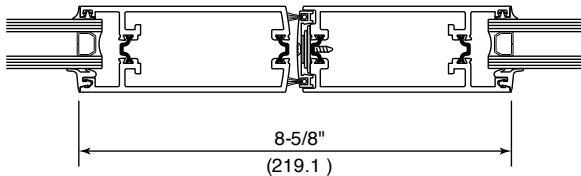


CRF - Frame: 57
CRF - Glass: 76
U - Factor: .57

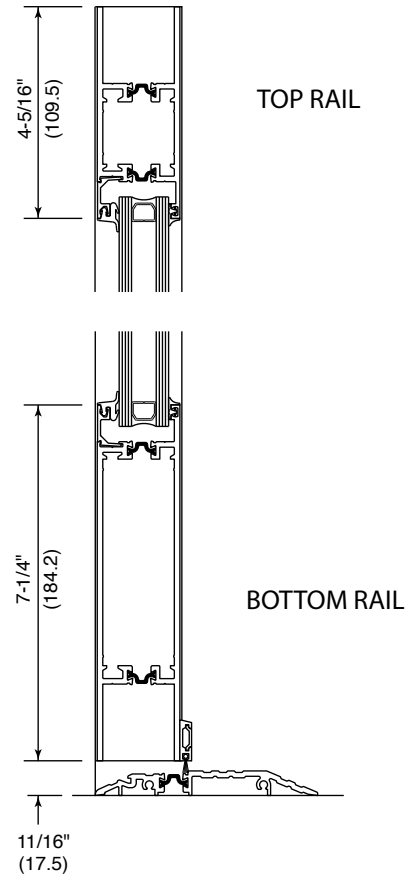


HINGE STILE

LOCK STILE



MEETING STILES



For Specifications, Details, and
Testing Data go to **usalum.com**.

NOT TO SCALE